

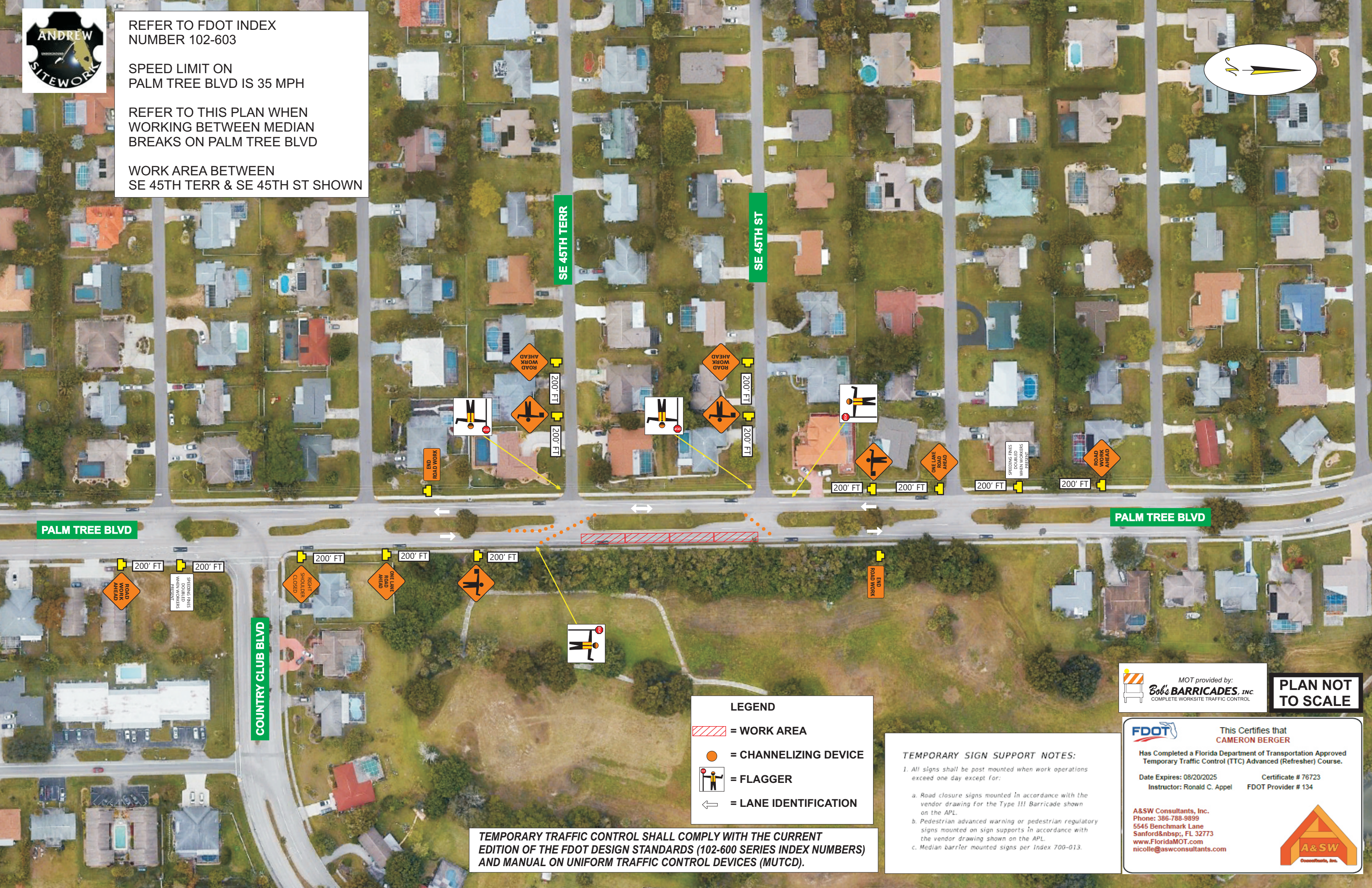


REFER TO FDOT INDEX NUMBER 102-603

SPEED LIMIT ON PALM TREE BLVD IS 35 MPH

REFER TO THIS PLAN WHEN WORKING BETWEEN MEDIAN BREAKS ON PALM TREE BLVD

WORK AREA BETWEEN SE 45TH TERR & SE 45TH ST SHOWN



PALM TREE BLVD





COUNTRY CLUB BLVD

SE 45TH TERR

SE 45TH ST

PALM TREE BLVD

LEGEND

-  = WORK AREA
-  = CHANNELIZING DEVICE
-  = FLAGGER
-  = LANE IDENTIFICATION

TEMPORARY TRAFFIC CONTROL SHALL COMPLY WITH THE CURRENT EDITION OF THE FDOT DESIGN STANDARDS (102-600 SERIES INDEX NUMBERS) AND MANUAL ON UNIFORM TRAFFIC CONTROL DEVICES (MUTCD).

TEMPORARY SIGN SUPPORT NOTES:

1. All signs shall be post mounted when work operations exceed one day except for:
 - a. Road closure signs mounted in accordance with the vendor drawing for the Type III Barricade shown on the APL.
 - b. Pedestrian advanced warning or pedestrian regulatory signs mounted on sign supports in accordance with the vendor drawing shown on the APL.
 - c. Median barrier mounted signs per Index 700-013.

MOT provided by:
Bob's BARRICADES, INC.
 COMPLETE WORKSITE TRAFFIC CONTROL

PLAN NOT TO SCALE

FDOT This Certifies that **CAMERON BERGER**
 Has Completed a Florida Department of Transportation Approved Temporary Traffic Control (TTC) Advanced (Refresher) Course.
 Date Expires: 08/20/2025 Certificate # 76723
 Instructor: Ronald C. Appel FDOT Provider # 134

A&S
 Consultants, Inc.
 Phone: 386-788-9899
 5545 Benchmark Lane
 Sanford & nbsp;, FL 32773
 www.FloridaMOT.com
 nicolle@aswconsultants.com